



ROBINSONS TEES VALLEY are delighted to market this three bed detached rental property. Situated on the Plantations, a popular residential location within Thornaby, Stockton-on-Tees.

This spacious home, comprises, in brief of entrance hall, lounge, dining room, conservatory, kitchen utility room. The first floor comprises three bedrooms, the master with refitted En-suite shower room and refitted family bathroom.

Externally to the front is a driveway leading to integral garage. This property is situated on the corner of a cul-de-sac and features a good sized west facing rear garden with raised decked area and lawn.

For a viewing contact ROBINSONS TEES VALLEY - Estate agents Stockton-on-Tees.
In Association with SMITH & FRIENDS Ltd.

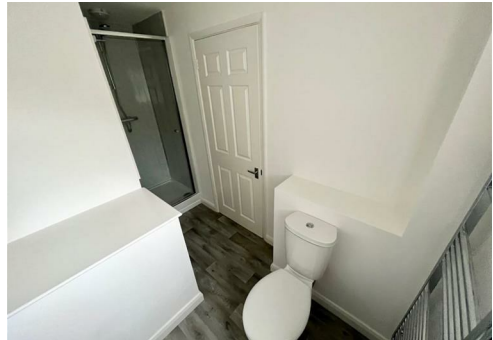
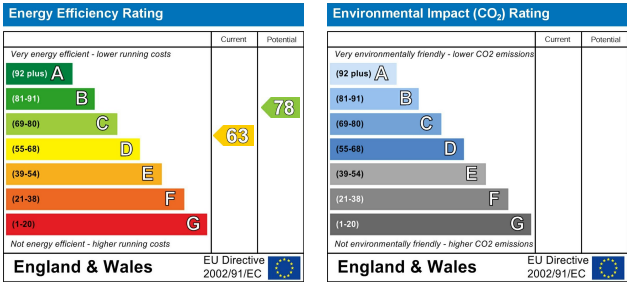
UNFURNISHED, NO SMOKERS, PETS CONSIDERED, Subject to Pet Rent £25 PER MONTH
Monthly Rent £850, Bond £980

Tenant Income
£25,500
Guarantor Income
£30,600

Sealand Close, TS17 9PG
3 Bedroom - House - Detached
£850 Per Calendar Month
EPC Rating: D
TENURE:
COUNCIL TAX BAND C
www.robinsonsteesvalley.co.uk

ROBINSONS
SALES • LETTINGS • AUCTIONS *Tees Valley*

Sealand Close, TS17 9PG



For clarification we wish to inform prospective purchasers that we have prepared these sales particulars as a general guide. We have not carried out a detailed survey, nor tested the services, appliances and specific fittings. Room sizes should not be relied upon for carpets and furnishings, if there are important matters which are likely to affect your decision to buy, please contact us before viewing the property. Robinsons Tees Valley can recommend financial services, surveying and conveyancing services to sellers and buyers. Robinsons Tees Valley staff may benefit from referral incentives relating to these services.

